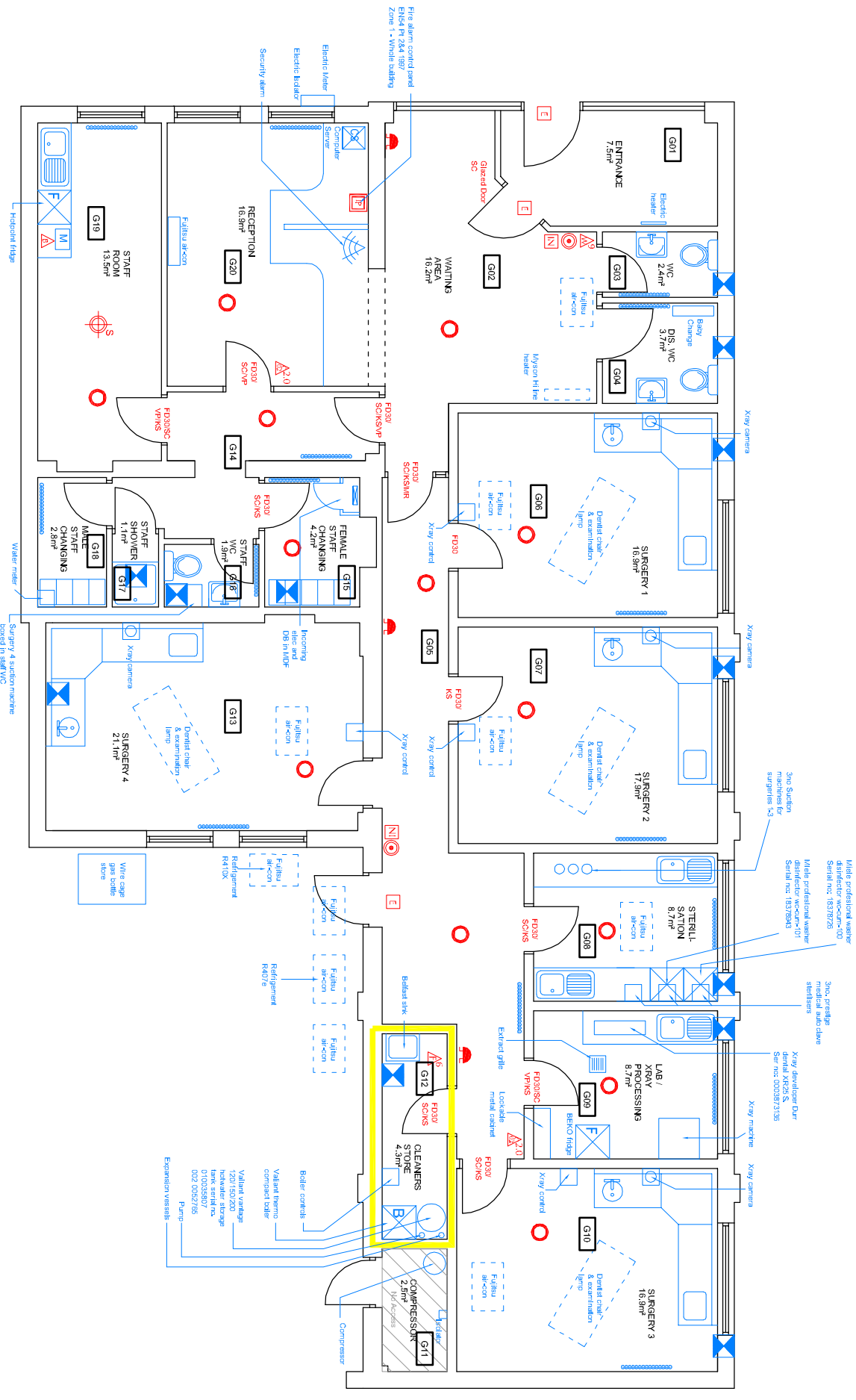


DENTAL ACCESS CENTRE, ABBEY ROAD, BARROW General Arrangement 'Fire & Assets' Plan



- FIRE KEY**
- FIRE ALARM SOUNDERS
 - STROBE TYPE
 - MAINS WIRED DETECTOR (SMOKE)
 - MAINS WIRED DETECTOR (HEAT)
 - BREAK GLASS ACTIVATION POINT
 - ESCAPE LIGHTING POINT
 - BREAK GLASS BOLT
 - 6L AFFF - F OAM SPRAY FIRE EXTINGUISHER
 - 9L WATER TYPE FIRE EXTINGUISHER
 - 9L WET CHEMICAL FIRE EXTINGUISHER
 - 9L DRY POWDER FIRE EXTINGUISHER
 - 2.5kg DRY POWDER FIRE EXTINGUISHER
 - 4kg CARBON DIOXIDE FIRE EXTINGUISHER
 - 4m FIRE SMOTHERING BLANKET
 - FIRE ALARM PANEL
 - FIRE ACTION NOTICE
 - CO ALARM
 - VOID DETECTOR
 - FIRE DETECTOR OPERATED LED
 - FIRE HOSE
 - ZONE
 - EXIT LIGHT KEY SWITCH
 - DOOR REFERENCE:**
 - FIRE DOOR
 - AUTOMATIC SELF CLOSING
 - SELF CLOSING
 - VISION PANEL
 - KEEP LOCKED
 - KEEP SHUT
 - HOLD OPEN DOOR
 - ASBESTOS PANEL
 - ASSETS KEY**
 - ELECTRICAL DISTRIBUTION BOARD
 - FRIDGE FREEZER
 - FRIDGE
 - OVEN
 - DISHWASHER
 - BOILER
 - AIR COMPRESSOR
 - WASH BASIN
 - WC
 - COMPUTER SERVER
 - PHOTOCOPIER
 - WATER HEATER
 - MICROWAVE
 - STORAGE HEATER
 - PANEL HEATER
 - RADIATORS
 - EXTRACT FAN
 - SECURITY ALARM
 - EXTRACT GRILLE
 - SUGGESTED ADDITIONAL NUMBERING REQUIRED
 - HAZARD area (FIRE)

Johnston and Wright Chartered Architects

15 Castle Street Carlisle Cumbria CA3 8TD tel +44 (0) 1228 525161 fax +44 (0) 1228 515559
email jw@jwarchitects.co.uk

Project Dental Access Centre, Barrow in Furness
NHS Cumbria Teaching Primary Care Trust
Drawing Ground Floor Plan as Existing
Fire Precautionary & Asset Installations Shown
Scale 1:50 Date 03/12 Drawn GC Number 11503 - 12 - 01 A

THIS DRAWING IS COPYRIGHTED. FEASIBILITY STUDIES ARE TO BE FOLLOWED BY PRELIMINARY DESIGN, CONCEPT DESIGN, AND DETAILED DESIGN. FROM THE COMMENCEMENT OF ANY WORK, ANY INFORMATION MUST BE REPORTED TO THE ARCHITECT IMMEDIATELY AND BEFORE PROCEEDING WITH THE WORKS. THIS DRAWING IS NOT TO BE REPRODUCED WITHOUT THE PERMISSION OF JOHNSTON AND WRIGHT.

Revisions:
REV A - 26/03/2012 Freeze green ITEMS TO ADDRESS Layer